

Preseason: Philadelphia Eagles 28, Green Bay Packers (1-1) 21
Thursday September 13th 1945 (at Philadelphia)

Eagles Display Strength in
Non-League Game Viewed by
90,218; Bays Show Promise

Philadelphia Eleven Defeats Packers, 28 to 21

GAME RECAP (GREEN BAY PRESS-GAZETTE)

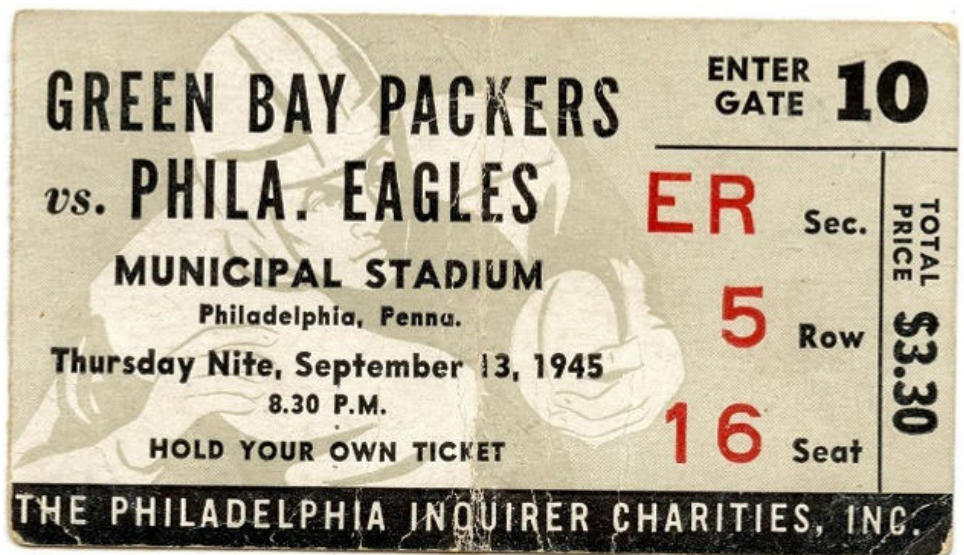
(PHILADELPHIA) - In about three weeks - that is, when the NFL's championship season gets underway - Curly Lambeau expects the Green Bay Packers to have a real good team. Curly is the last person to deceive anyone, except maybe an opponent, about the strength of his club and it was obvious to virtually everyone in the record crowd of 90,218 that saw the Packers take a 28-21 defeat from the Philadelphia Eagles Thursday night in the Philadelphia Inquirer charity game that it wasn't a good Green Bay team. The crowd, largest ever to see a tussle between two professional clubs although it has been surpassed by All-Star gatherings in Chicago, got plenty of action if not much else. The Packers got off to a first quarter lead and held it until the half was nearly over.

FAST THIRD QUARTER

The Eagles, boasting a fine array of fast backs operating in tricky T-formation plays, really went to town in the third quarter, ringing up three touchdowns and having two more called back for holding infractions. The Eagles also lost a first period score because of a penalty after Steve Van Buren had sprinted 75 yards from scrimmage in the most brilliant run of the evening. As a final "kicker" the Packers came back to score two touchdowns in the dying moments of the last quarter, but the third period was the payoff. After a series of penalties had set the Packers back on their heels, Van Buren dashed 22 yards for a score that gave Philadelphia the lead for the first time. Just two plays after the kickoff, Sonny Karnofsky, a rookie from Arizona, intercepted one of Irv Comp's passes and ran it back 39 yards for another score. After two scoring plays had been called back and the Eagles penalized for offensive holding, Karnofsky intercepted a pass by Roy McKay near midfield and ran it back 22 yards to the Packer 24. Immediately Al Sherman cut loose with a long pass to Karnofski, who grabbed it on the 10 and went in for the final Eagle tally.

LONG PASS CLICKS

The Packers, knocked back on their heels through most of the final quarter, went a long way toward justifying Lambeau's "good team" prediction in the last two minutes. After Charlie Tollefson recovered a Sherman fumble on the 43, Comp cut loose a long pass to Nolan Luhn, good for 41 yards, to put the Packers back into the game. On the ensuing kickoff, Jack Banta was chased back over his own goal as he tried to circle away from tacklers after taking the ball on his own four. As he crossed the line, Banta dropped the ball and Larry Craig dived on it for the final touchdown. Lambeau's theory -



expounded before the game, incidentally, is that the Packers had to be "up" for the All-Star game this year. Since then they have lost nine old players, and acquired a lot of new ones, who didn't have much chance to drill on their plays. Given another three weeks of practice and a couple of exhibitions, the Packer coach figures they will be able to put up a somewhat smoother performance in their regular season opener against the Bears.

SERIES OF BREAKS

The first quarter started off with a series of breaks, most of which seemed to favor the Packers although the period was nearly over before they managed to make much use of them. Van Buren returned the opening kickoff 22 yards to the 25, then lugged the ball twice more for long gains. The second, about 15 yards to the 44. On the next play, Zimmerman fumbled and Croft recovered for Green Bay on the Eagles' 40. Two shots at the line were good for only about two yards and McKay's long pass downfield was incomplete. Then Glen Sorenson dropped back for a 37 yard field goal try that was far wide of the goal posts. Philadelphia got a break when the officials ruled interference on a pass to Cabrelli and it went as complete for a 10-yard gain to the 35 yard line. But the Eagles were stopped dead there and had to kick. McKay fumbled as he

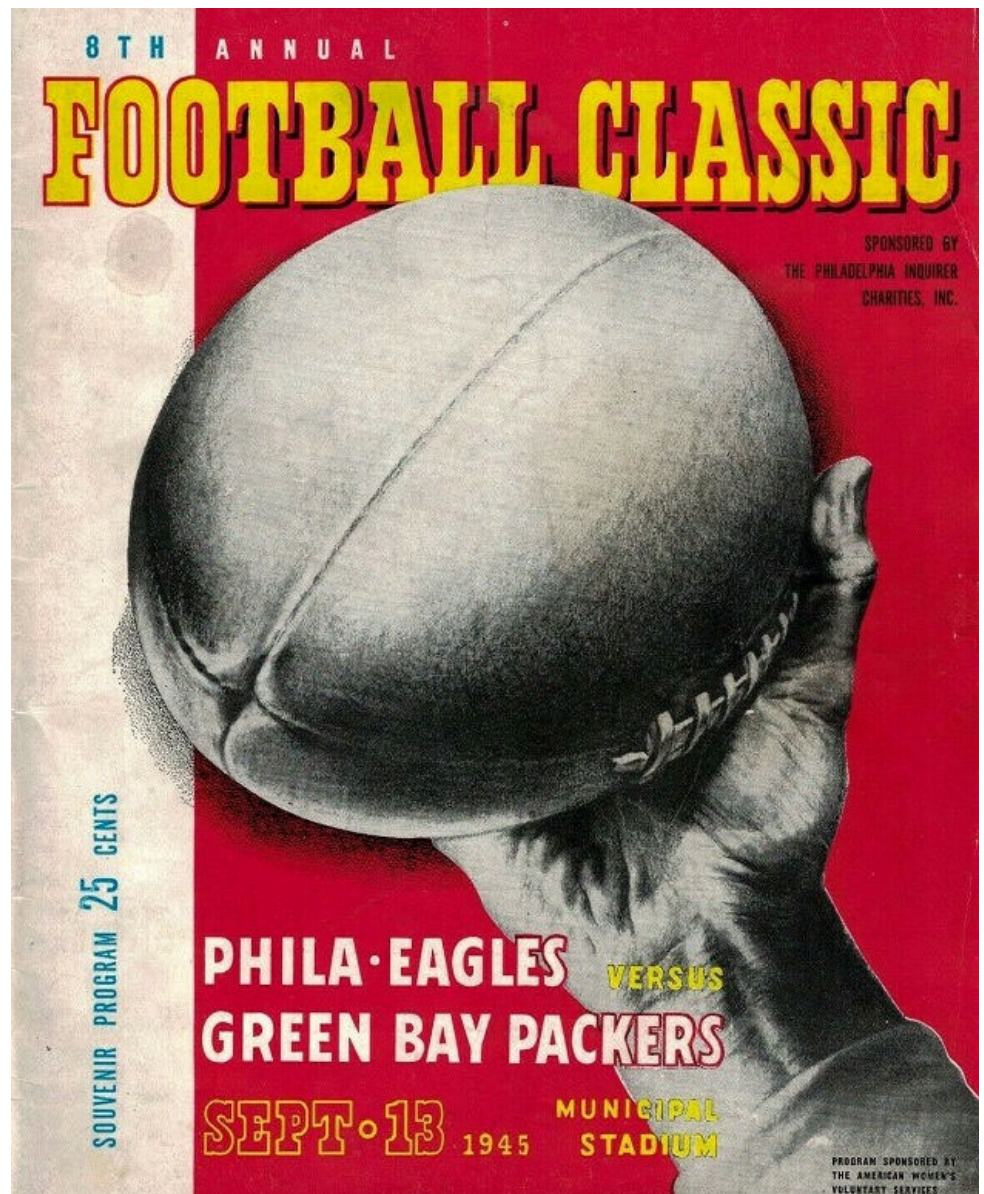
took the ball on the Packers' 22 but recovered and picked up about three yards before he was smeared. Then he made a quick kick that went out of bounds on the Philadelphia 25.

TOUCHDOWN CALLED BACK

On the first play after that kick, Van Buren slipped through tackle and went all the way on a beautiful run that didn't count. It was called back and the Eagles were penalized to their 12 yards line for clipping just beyond the line of scrimmage. Kish made a quick kick that was good for only about 25 yards, going out of bounds on the Eagles' 37. The Packers lost on an exchange of penalties, going back 15 yards to the 37 for clipping after getting a first down on a Philly offside. A Comp to Goodnight pass made up that distance, but they couldn't connect again and had to yield the ball. A moment later Zimmerman fumbled and the Packers recovered on the 20 to pave the way for a touchdown. After an incomplete pass, Fritsch took the ball from Comp on a reverse and went around his own left end for the score. He was knocked down on about the 10 but came up and completed the tour. Brock converted and Green Bay led, 7-0. After the kickoff, Van Buren broke loose for 43 yards on a flashy run and the quarter ended with the Eagles holding the ball on the Packer 37. A moment later Zimmerman and Kish collaborated on a 32-yard pass and run that put the ball on the five. A backward pass to Van Buren lost 11 yards but a flat pass, Zimmerman to Cabrelli, picked up 12. Then another lateral was smeared for a five-yard loss on fourth down and the Packers took over. Fritsch broke loose for 13 yards but a couple of penalties for too much time out stopped the Packers and McKay got off a long kick that rolled between Van Buren's legs and was downed on the Eagles' 40.

START TOSSING PASSES

Sherman started tossing passes, first to Cabrelli for nine yards, then a long heave that Charlie Gauer took with a remarkable catch on the 14 and carried five more yards before he was downed. The Packers were offside when Hinkle tried a field goal and Van Buren fumbled on the next play, Sorenson recovering for Green Bay on the four yard line. After an exchange of



kicks, Philadelphia started from its own 45. Karnofski gained 13 yards, then Sherman dropped back, got away a long pass while the Packers were rushing him and McDonald grabbed it on the 12 yard line and went the rest of the way for a touchdown. The play was good for 42 yards. Zimmerman converted to tie the score. The Eagles got another chance before the half ended when Linsdskog intercepted a Comp pass on the Packers' 40. Zimmerman completed a long pass to Ferrante, who made a spectacular pass on the nine yard line. Hinkle's field goal attempt on the last play of the half was blocked.

PLAY RULES CLOSE

The Eagles' principal weakness was revealed by those two no-count touchdowns in the third quarter. They were shaving the rules a bit close particularly on reverse plays, and twice the linemen were caught holding when it hurt. The two plays that were called back were virtually the same with Sherman handing off the ball to Van Buren and Karnofsky on reverses while the lines opened big holes. Perhaps the most noticeable Packer weakness was their inability to protect their passers. Before and during the game a few tons of DDT were sprayed around the stadium to kill off the cloud of mosquitoes that usually infest the place. The Packers wished they could use the same treatment on the Philly backs.

The Starting Lineups:

PACKERS	EAGLES
Urban, le	Ie, Ferrante
Croft, lt	It, Sears
Sorenson, lg	Ig, Sanders
Flowers, c	C, Manzini
Bucchaneri, rg	rg, Suffridge
Lipscomb, rt	rt, Wistler
Mason, re	re, Cabrelli
Starrett, qb	qb, Zimmerman
McKay, lhb	lhb, Van Buren
Laws, rlb	rlb, Butler
Perkins, lb	lb, Kish

Replacements

Packers: Ends — Goodnight, Luhn, Dingler. Tackles — Ray, Mc Pherson, Neal, Clark. Guards—Cope, P. Tinsley, Toitelson, Monaco, Frankowski. Center — C. Brock. Backs—Fritsch, Comp, L. Brock, Adkins, Craig, Keuper, C. Brock.
 Eagles: Ends — Gauer, McDonald, Smith, Durko. Tackles — Mandarin, Kilroy, Fritts. Guards—Michaels, Maroon. Center — Krovic, Linsdskog. Backs—Sherman, Karnofski, Rogalla, Hindki, Banta, Phillips, Agajanian.

Score By Periods

Eagles	0	7	21	0	28
Packers	7	0	0	14	21

The Scoring

Packers: Touchdowns—Fritsch, Luhn, Craig. Points after touchdowns—Brock, Fritsch 2.
 Eagles: Touchdowns—McDonald, Van Buren, Karnofski 2. Points after touchdown—Zimmerman 3, Agajanian.

The Statistics

First downs—Packers 4, Eagles 10.
 Total yards gained — Packers 79, Eagles 254.
 Yards gained rushing — Packers 24, Eagles 138.
 Yards gained passing—Packers 55, Eagles 116.
 Forward passing—Packers attempted 20, completed 5, had 4 intercepted. Eagles attempted 20, completed 9, had 1 intercepted.
 Yards intercepted passes returned—Packers 18, Eagles 67.
 Average distance punts—Packers 43, Eagles 36½.
 Yards punts returned—Packers 13, Eagles 78.
 Penalties—Packers 53, Eagles 60.
 Fumbles—Packers 9, Eagles—5, recovered 9.

GREEN BAY	-	7	0	0	14	-	21
PHILADELPHIA	-	0	7	21	0	-	28

SCORING

- 1ST - GB - Ted Fritsch, 20-yard run (Charlie Brock kick) GREEN BAY 7-0
- 3RD - PHIL - Don McDonald, 42-yard pass from Allie Sherman (Don Zimmerman kick) TIED 7-7
- 3RD - PHIL - Steve Van Buren, 23-yd pass from Zimmerman (Zimmerman kick) PHILADELPHIA 14-7
- 3RD - PHIL - Sonny Karnofsky, 39-yard interception return (Zimmerman kick) PHILADELPHIA 21-7
- 3RD - PHIL - Karnofsky, 24-yard pass from Sherman (Ben Agajanian kick) PHILADELPHIA 28-7
- 4TH - GB - Nolan Luhn, 41-yard pass from Irv Comp (Ted Fritsch kick) PHILADELPHIA 28-14
- 4TH - GB - Craig recovered fumbled kickoff in end zone (Ted Fritsch kick) PHILADELPHIA 28-21

NO ONE KNOWS IF HUTSON IS THROUGH

SEPT 14 (Philadelphia) - One problem agitating the football minded populace is whether Don Hutson intends to make his fourth annual retirement stick. Don played for the Green Bay Packers in the All-Star game at Chicago because that was supposed to present the 1944 NFL champions but he didn't appear in Thursday night's exhibition against the Eagles. Even his boss, Curly Lambeau, doesn't know what Hutson eventually will decide and he no longer intends to coax his star performer. One reason is Clyde Goodnight, the tall boy from Tulsa U., who has taken over Hutson's end post. Lambeau fairly glows when he tells his fast and how promising Goodnight looks. If Hutson is through, he will have established one more record. His first professional play was an 85-yard touchdown pass; his last an 85-yard scoring run with an intercepted pass.

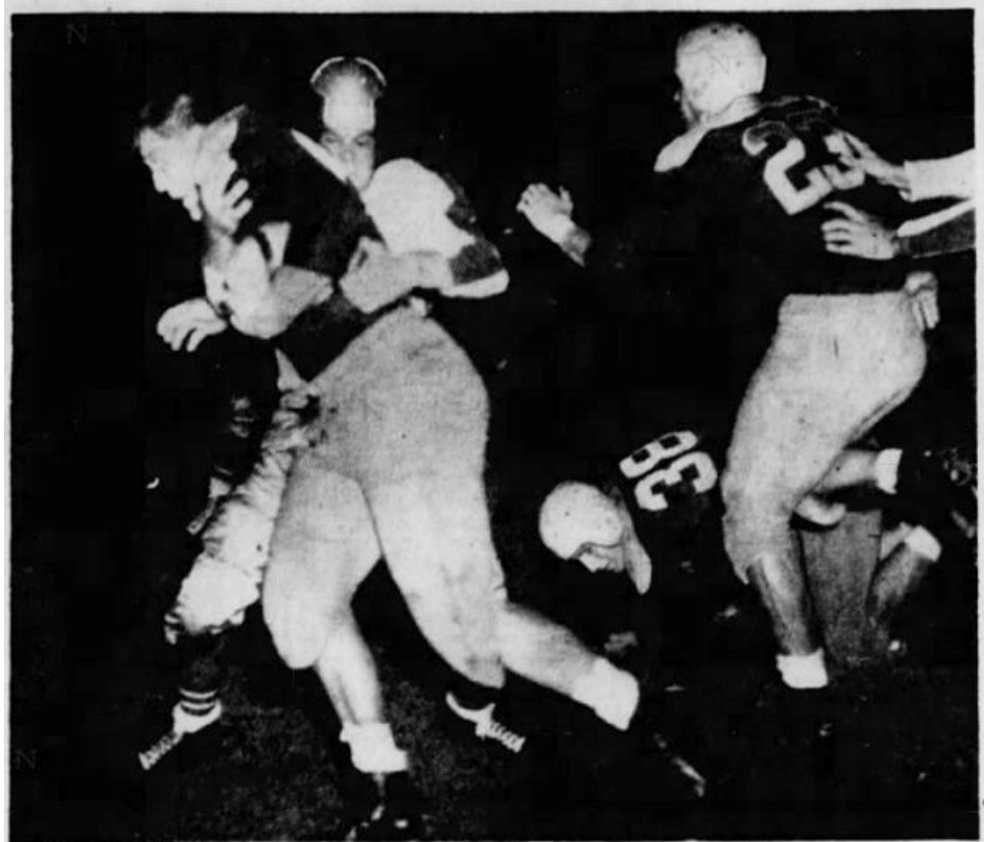
LACK OF OFFENSIVE STEAM IN DEFEAT BY EAGLES INDICATES TROUBLE AHEAD

SEPT 14 (Milwaukee Journal) - There was more than a little hint in the 28-21 licking the Packers took from Philadelphia Thursday night that all may not be so rosy along the banks of the Fox this fall. It wasn't the licking itself. The Philadelphia roster bulges with guys who can run with or throw a football. The Eagles stand up in the very front line of this year's contenders. It wasn't the score, either. The 28-21, by itself, looks respectable enough. It was instead the team's obvious inability to get up a good head of offensive steam and to create by its own power a few of its scoring opportunities. It is good football to be to cash in consistently on the other side's mistakes or to make alert defensive ball pay off, and to this extent the Packers have looked good. It is not enough, though, to go successfully through a campaign such as the Packers face. There must be something else, a consistent punch of their own, and this Packers have yet to reveal...BREAKS

Packers Begin Drills For Second Exhibition

Pittsburgh Steelers to Be Opposing Eleven In Wednesday Night Contest at Hershey, Pa.; Lambeau Not Happy About Eagle Tilt Result

FAVORED BAYS: In two games now, Green Bay has scored 40 points. The team beat the College All-Stars, 19-7, and lost Thursday, 28-21. It has scored five touchdowns, five points after touchdown, a field goal and a safety. Yet on only three of these points, and not including the points after touchdown, of course, has it showed itself able to maneuver the ball into position on its own. On the kickoff of the All-Star game, the Packers took the ball and immediately moved down to the 12 from where four plays later, Hutson stepped back to the 20 and booted a field goal. Every other point, while earned on good football of a kind, has left something to be desired. Position for the first touchdown in the All-Star game was obtained when Schlinkman fumbled on his own 20 and the Packers recovered. The second touchdown was scored when Hutson intercepted a pass and ran it back 85 yards. And the final points were scored when Kennedy gave the Packers the outright and rather inexplicable gift of a safety. Again Thursday night this was true. The Packers, by their own power, never got beyond midfield. They scored only with the help of Philadelphia's mistakes and partly on good defensive football. They got position in the first quarter by recovering a fumble on Philadelphia's 18, got position for their second in the last two minutes by recovering a fumble on Philadelphia's 43, and scored their third touchdown in the last minutes by recovering a fumbled kickoff in the end zone. Good football, but hardly the kind which might be expected to carry the Packers through the whole season...LAMBEAU USED NEW MEN: Of course, this was true. Lambeau experimented with new men freely. He was without some of the key men, who left the squad after the All-Star game. He didn't have Don Hutson, who sat out the game in civilian clothes on the sidelines. These things had a bearing, no doubt, on Green Bay's performance - and Philadelphia writers did not think much of it. Yet



Ted Critesch of the Green Bay Packers' is slowed up by Ben Kish of the Philadelphia Eagles just short of the goal line in the first quarter of Thursday night's charity grid contest in Philadelphia, but he managed to struggle across to score for the Packers. Goodnight (23) and Luhn (38) of the Packers give interference. (AP wirephoto.)

even with allowance for them, the road ahead looks a little bumpy unless the team gets more help than it now reasonably can expect or finds a real punch on its own in what material it now has. The big hope is Lambeau. He has found himself in a position like this before and has turned out a winner, if not exactly a champion. He can do it again. On the other side of the fence, the Eagles with their performance Thursday definitely strengthened the suspicion that they will be the team to beat in the east. They not only showed great punch, outgaining the Packers almost four to one and scoring four touchdowns, but had three other touchdowns called back and a field goal nullified. They will be tough, and it is just as well that the Packers do not have to meet them in the regular campaign. Green Bay's next start will be against Pittsburgh at Hershey, Pa., next Wednesday night.

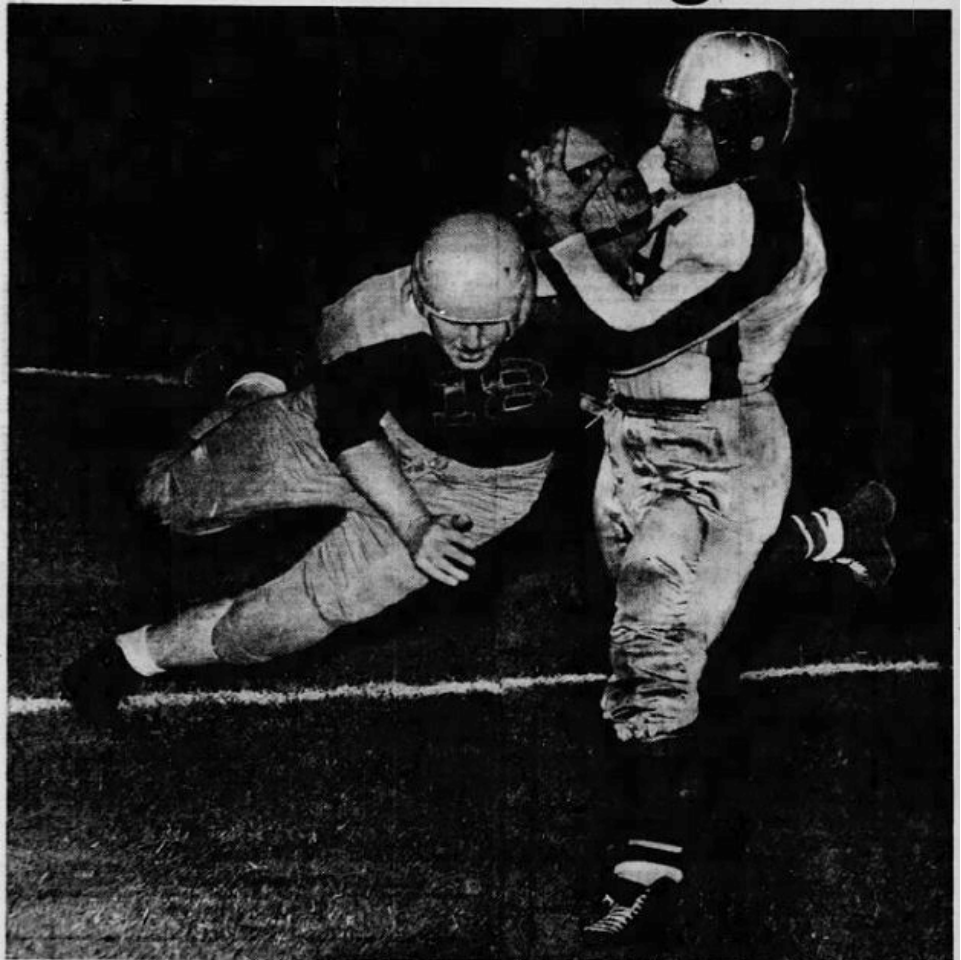
PACKERS BEGIN DRILLS FOR SECOND EXHIBITION

SEPT 15 (Hershey, PA) - The Green Bay Packers, somewhat chastened from their 28-21 loss to the Philadelphia Eagles, have arrived in this town that chocolate made famous -

or the other way around - and immediately set out upon a pattern of lengthy workouts calculated to being them a victory against the Pittsburgh Steelers next Wednesday night. Coach Curly Lambeau was not exactly happy about the outcome of Thursday night's fracas, when the Eagles completely dominated play except for a brief skirmish in the first period when the Bays scored their first touchdown on a 20-yard march after recovery of a fumble. But there was some balm in the fact that the contest gave practically everybody on the Packer squad a chance for action...**PLANNED THAT WAY:** This is the way Lambeau planned it and today, as the defending champions of the NFL, opened practice after a layoff Friday, the big Belgian has a pretty good line on what to expect when the league season opens in Green Bay's City stadium the afternoon of Sept. 30. While here, the Packers are living at the Community house and they are receiving a considerable amount of attention from the good burghers. Today they had a chance to see how a championship squad prepares for a game. The drill was scheduled to be light but the Packers went through their repertoire of plays and heard where they had made their principal mistake - especially on defense of the passer - in the game with the Eagles. The Green Bay ground game will come in for considerable work during the next four days. Lambeau doesn't like the looks of the statistics in that department. The Eagles' veteran forward wall held the Wisconsin eleven to 24 yards rushing. Although comparative statistics are lacking, the total is probably the smallest for the Bays since they began kicking the ball around 27 years ago. So far as is now known, no serious injuries were sustained by the Packers Thursday. They should be near 100 percent physical shape for the Steeler exhibition. Their mental frame of mind may be something else again, Lambeau warned, since the Steelers have not been recognized for their power in the last two years. Last year especially they had a rough road in their combination with the Chicago Cardinals. The Packers will leave here next Thursday morning for Washington, where they meet the Redskins in another non-league game Sept. 23. They are due to return to Green Bay the following day.

LAMBEAU PRAISED BY MARSHALL

SEPT 16 (Washington) - The Green Bay Packers, champions of professional football, may set an all-time attendance record this season. George Preston Marshall, owner of the Washington Redskins, predicted Saturday that the Packers would surpass the existing record of approximately 600,000, set by the Redskins last season. They have played to about 180,000 persons in two exhibition games, the first against the College All-Stars in Chicago's Soldier field and the second against Philadelphia's Eagles in municipal stadium. "I'm going to present Curly Lambeau with some kind of an award when the

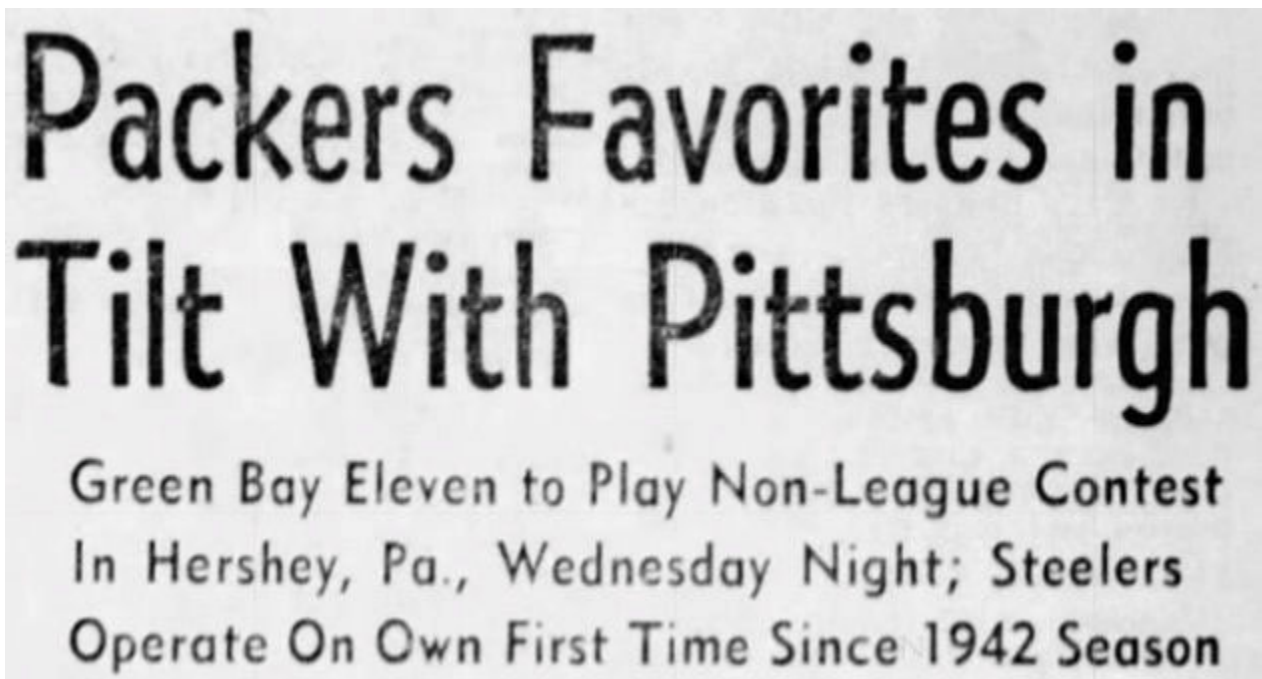


LARRY CABRELLI NAILED IN HIS TRACKS BY HARD TACKLE AFTER CATCHING PASS
Eagles' captain and star end has just snared Al Sherman's 15-yard toss in third period, but Ken Keuper, Packers' back, was right on top of the play and Cabrelli couldn't elude him. Eagles won, 28-21, in eighth annual football classic sponsored by The Philadelphia Inquirer Charities, Inc., at Municipal Stadium before 90,218.

Packers play the Redskins in Washington September 23," Marshall said. "He's done one of the great all-time jobs in either college or professional football in coaching the Packers so successfully over a 25 year span."

WRAY TO SCOUT BOSTON GRIDDERS

SEPT 17 (Hershey, PA) - Assistant Coach Lud Wray of the Pittsburgh Steelers will scout the Boston Yanks-New York Giants pro grid exhibition tomorrow night in Lynn, Mass. The Steelers meet the Yanks on September 25 in Boston in their first National League game. They play Green Bay in an exhibition here on Wednesday.



PACKERS FAVORITES IN TILT WITH PITTSBURGH

SEPT 17 (Hershey, PA) - There isn't much to be said about the relative merits of the Green Bay Packers and the Pittsburgh Steelers today except that the Packers should win their second victory in three starts in exhibition contests when they tangle with the Steelers here Wednesday night. Of course, Coach Curly Lambeau never takes anything for granted and he's holding overtime practice sessions to sharpen the Bays for the tilt. A heavy rain prevented the Packers from working out this morning, but they hoped to hold a heavy drill this evening. The Steelers this year are making their way along for the first time since the 1942 season. In 1943 they combined with the Philadelphia eleven, which combination absorbed a 38-28 lacing from the Bays at the fag end of the the season. Last year, Pittsburgh had an unhappy relationship with the Chicago Cardinals, leading to a victory-less season. The last time Wednesday night's rivals met as Packers-Pittsburgh was in 1942. Green Bay won, 24-21...

NEW COACHING STAFF: Operating under a new coaching staff, Jim Leonard and Lud Wray, the Steelers will have several veterans ready for action and a flock of newcomers. One of the latter is halfback Paul Duhart, who saw service in Green Bay last season under a working agreement with the Packers. Duhart reported to the Steelers after the All-Star game in Chicago and is ready to start at the left halfback spot. Other backfielders who have experience include Bobby Thurbon, Johnny Butler, Johnny McCarthy, the little fellow from St. Francis who sparked the combination Card-Pitts last year, and George Magulick. Veteran linemen include Eberle Schults, a tackle, Tony Bova and Walt Kischefski,

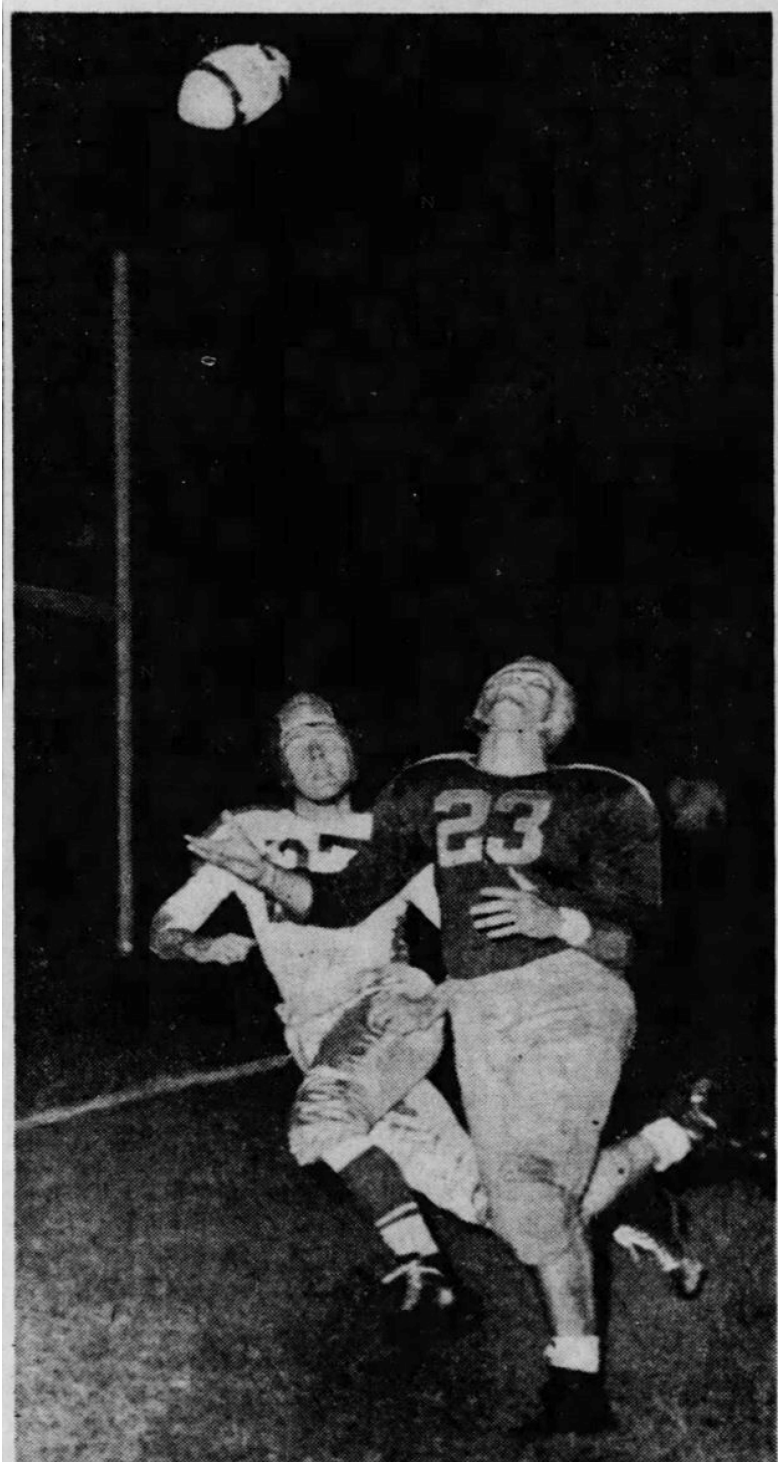
STEELERS		PACKERS
Bova	L. E.	Urban
Stough	L. T.	Croft
Merkovsky	L. G.	Sorenson
Pense	C.	C. Brock
Perko	R. G.	Bucchaneri
Doyle	R. T.	Lipscomb
Pierre	R. E.	Mason
Petchel	Q. B.	Starrett
Stofko	L. H.	McKay
Popovich	R. H.	Laws
Lucente	F. B.	Perkins

ends; and Albert Wukits, center. The Steelers were unsuccessful in their first non-league contest against the potent Cleveland Rams, losing 21-0...**EVERYBODY WILL PLAY:** Coach Lambeau will follow the same pattern in the starlight contest here as he did against the Eagles. He will use practically every member of the squad, the assumption being that both veterans and rookies alike can stand the work for the pending championship race which the Bays open at City stadium in Green Bay a week from next Sunday against the Chicago Bears. The final workout is to be held Tuesday morning with a chalk talk scheduled for the afternoon. The squad will leave here Thursday morning for Washington where the final non-league contest in the east will be played against the Redskins next Sunday.

PACKERS STYMIED IN PRACTICE BY RAIN; END ED FRUTIG JOINS TEAM

SEPT 18 (Hershey, PA) - "Rain, rain, go away", was the plaintive cry of Coach Curly Lambeau of the Green Bay Packers today as he peered up at leaden skies and wished that he could get the ball club out on dry ground for just one practice session before Wednesday night's non-league contest against the Pittsburgh Steelers. The Bays have been somewhat stalled

in their preparations because of what Californians would call a "heavy dew", but there was one reason for Lambeau to smile. Former All-American end Ed Frutig is now officially a civilian again after almost four years in Uncle Sam's Navy and he has joined the squad. Addition of the Wolverine star to the squad was not unexpected because he had visited Green Bay last week en route to Great Lakes Naval Training station for his discharge. The ex-Packer (he played his first season with the team in 1941) is 6 feet 1 inch tall and weighs 185 pounds. He stepped right into his gridiron work clothes and should bolster the Packer end corps...OTHER ADDITIONS POSSIBLE: There were several other possible additions to the team in the offing but Lambeau doesn't care about counting his chickens before they are hatched. The only indication he would give of possibilities was the smile that played around his mouth when questions were asked. Meanwhile, he keeps looking up at the sky, wishing that the rains would cease. He figures just about a season's amount has fallen already. The squad is in good physical condition with the exception of tackle Tiny Croft and guard Pete Tinsley, both of whom have bruised shoulders. The injuries are not serious enough to keep them sidelined Wednesday night and both are expected to see considerable action along with about 26 other members of the traveling squad, veterans and rookies alike...15,000 FANS EXPECTED: The team worked out Monday night under the lights in Hershey stadium, where about 15,000 fans are expected to gather for the non-championship game. The Steelers will be on familiar ground since they have been working out here since preseason practice got underway several weeks ago. The field is somewhat like the Packers' home grounds, City stadium in Green Bay. Incidentally, the players are already talking about the Packer-Bear contest there Sept. 30. Wednesday night's contest will be thoroughly scouted by Washington Redskin operatives since the Packers will be in the capital next Sunday afternoon for another exhibition against George Preston Marshall's outfit. The Packers will hold only a single workout in Washington for this tilt. It is scheduled for Saturday morning. A Friday morning practice is scheduled here with the squad leaving for Washington shortly after noon Friday...NON-LEAGUE TILTS SET: Several other exhibitions games are on tap for league teams, including two tonight. The New York Giants will tangle with the Boston-Brooklyn Yankees at Lynn, Mass., and the Chicago Bears, defeated in their first non-league game by Washington, meet the Philadelphia Eagles at Bethlehem, Pa. Besides the Packer-Redskin tilt Sunday, other games will out the Giants against the Bears at Buffalo, Cleveland against the Eagles at Akron, O., and the Chicago Bears against the Detroit Lions at Milwaukee. The Cardinal-Lion game will officially open the league season...START DIFFERENT LINEUP: Lambeau indicated today that he would start a different lineup than any other he has used this season in tilts against the College All-Stars and Philadelphia Eagles. He, however, withheld the names of the starters until Wednesday, the same tactics being used by Coach Jim Leonard of the Steelers.



PACKERS' LONG PASS OVERSHOTS MARK

Note facial expressions as Johnny Butler, Eagles back, covers Clyde Goodnight (23), Green Bay end, on long pass by Ted Fritsch which fell incomplete in end zone. Action occurred in first period of eighth annual Philadelphia Inquirer Charities football classic at Municipal Stadium, which the Eagles won, 28-21.

START DIFFERENT LINEUP: Lambeau indicated today that he would start a different lineup than any other he has used this season in tilts against the College All-Stars and Philadelphia Eagles. He, however, withheld the names of the starters until Wednesday, the same tactics being used by Coach Jim Leonard of the Steelers.

STEELERS FACE PACKER ELEVEN

SEPT 18 (Hershey, PA) - In their second and final preseason exhibition, the Pittsburgh Steelers will meet the Green Bay Packers, world's professional champions, here in the Hershey Stadium tomorrow night starting at 8:30. The Steelers dropped their only previous start to Cleveland's powerful Rams in Buffalo by 21-0. Green Bay beat the College All-Stars in Chicago by 19-7 but dropped a 28-21 decision to the Philadelphia Eagles last week in Philly. Retirement of end Don Hutson in the latter game was keenly felt. Frank Kimble, who started at right end against Cleveland, has left the Steelers and is reported resuming his college career at West Virginia U. In his place Joe Pierre, ex-Pitt wingman, will start tonight. Today the Steelers bought halfback Jack Lowther, a graduate of Detroit University, from the Detroit Lions.

PACKERS, STEELERS PLAY 'FOR CERTAIN'

SEPT 19 (Hershey, PA) - Regardless of weather conditions the Green Bay Packers, champions of the NFL, and the Pittsburgh Steelers will play an exhibition game here Wednesday night. Bert Bell, president of the Steelers, said the game would be played "even if it would snow." Both teams have kept idle for the last two days by rain. Coach Curly Lambeau of the Packers announced a last minute change in his backfield, sending Don Perkins to fullback. The Steelers will also have two new men in the backfield. Coach Jim Leonard name Toimi Jarvi for one of the halfback posts and Allen Nichols at fullback.

STEELERS FACE TOUGH 'WARM-UP'

SEPT 19 (Hershey, PA) - Regardless of weather conditions the Green Bay Packers, champions of the NFL, and the Pittsburgh Steelers will clash here tonight in an exhibition grid battle. Bert Bell, president of the Steelers, said the game would be played "even if it should snow." Both teams have been kept idle for the past two days by rain, and the rival coaches were forced to be content with blackboard drills and pep talks. Coach Curly Lambeau of the Packers announced a last-minute change in his backfield, sending Don Perkins to fullback. The Steelers also will have two new men in the backfield. Coach Jim Leonard named Toimi Jarvi for one of the halfback posts, and Allen Nichols at fullback. Both tip the beam at 200 pounds.

PACKERS SET FOR NON-LEAGUE TEST AGAINST PITTSBURGH STEELER TEAM

SEPT 19 (Hershey, PA) - The Pittsburgh Steelers will attempt to do something they have never been able to maneuver before when they tangle with the Green Bay Packers in a non-championship football game here tonight before a crowd of 15,000 customers. The contest will be played in the beautiful Hershey civic stadium. From 1933 down to the present, the Steelers have never been the victors in a league contest against Coach Curly Lambeau's aggregation. They couldn't win when operating by themselves and they failed also when in combination with the Philadelphia Eagles in 1943 and with the Chicago Cardinals last season. The Packers, whose practices have been somewhat curtailed because of wet weather, have a record of eight victories over the Steelers, two over the Card-Pitt combine, and one over the ill-fated Steagles of 1943. But the tide may change in tonight's exhibition although Lambeau's eleven must necessarily be given the edge because of super experience...**PACKERS WANT VICTORY:** The Packers want to get back into the win column following their 28-21 defeat by Philadelphia last Thursday. Lambeau and his helpers, Line Coach Walt Kiesling and Asst. Coach Don Hutson, have worked hard to eliminate errors made in that contest and they have also had inside sessions a couple of evenings. But the Steelers, under Coach Jim Leonard, haven't been wasting time either. The Packers will open with nine veterans and two rookies, Lambeau announced today. The recruits are tackle Ed Neal, formerly of Tulane, and blocking back Ken Keuper,



Jack Sanders, former Marine lieutenant who lost his left hand at Iwo Jima and who is now a guard on the Philadelphia Eagles professional football team, shows Pfc. Jimmy Wilson (left), who lost all four limbs in a plane crash, and Pfc. Ernie Sardo of Elmira, N. Y., who lost two legs and an arm, how he handles a football. The picture was taken Thursday before the Eagles-Green Bay Packers charity game in Philadelphia. (AP Wirephoto)

who saw undergraduate service at Georgia. He was recently shifted to blocking back when it was certain that veteran fullback Don Perkins would return to the squad...TACKLES WEIGH 280: Perkins will start fullback with the other backfield spots going to veterans Roy D. McKay at tailback and Joe Laws at right half. The forward wall will have Alex Urban and Joel Mason at end, Tiny Croft at left tackle, giving the Bays a 280-pound average at that spot as both Croft and Neal weigh in at that figure, Glen Sorenson and Mike Bucchanieri at guard, and Bob Flowers at center. Lambeau indicated that some changes may be made before the game and for certain the lineup would be shifting frequently during the 60 minutes. He is giving recruits and veterans alike sufficient opportunity to play in exhibitions to prepare them more fully for the league opener against the Chicago Bears in Green Bay on Sept. 30. The Packers will stay at the Community Inn here until Friday noon, when they will leave for Washington and their Sunday exhibition against the Redskins. No workout will be held Thursday, but Lambeau has scheduled practice Friday morning and another the following day. A sellout crowd will watch Sunday's game in the capital. The team will leave for Green Bay immediately after the contest with arrival scheduled there on the Milwaukee road's Chippewa at 4:40 Monday afternoon.

Packers Set for Non-League Test Against Pittsburgh Steeler Team

Photographic Sidelights of Football Classic





SIDE BY SIDE Connie Dunnett and Abby Fisher were rooting for opposing teams, Connie being a booster for the Green Bay Packers and Abby favoring the Eagles. Despite good natured rivalry all fans enjoyed themselves.

PANORAMIC VIEW OF VAST THROG AT EAGLES-PACKERS THRILLER; NAVY BAND IN MIDFIELD



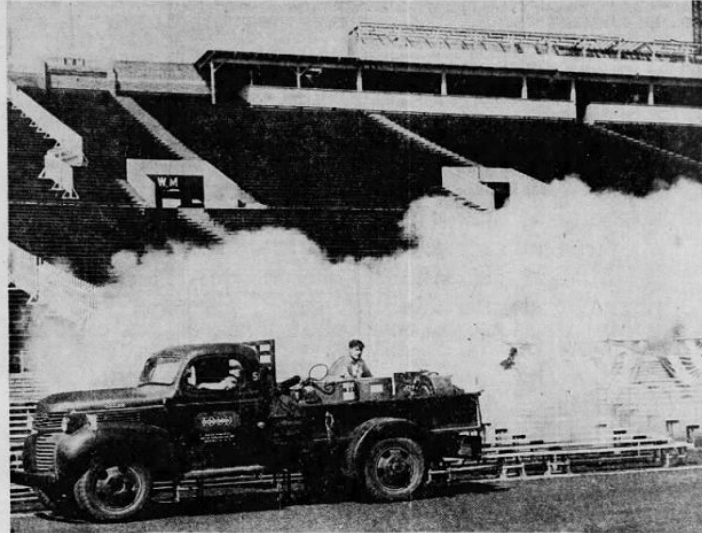
SOLDIERS FROM THE M. P. BARRACKS IN FAIRMOUNT PARK WATCH GAME



CLOSE-UP OF FAMED 80-PIECE NAVY BAND, AN OUTSTANDING FEATURE



OFFICIALS ATTEND Director of Public Safety James H. Malone (left) and Mayor Bernard Samuel, both enthusiastic football fans, occupied a field box to witness last night's grid extravaganza.



SPRAYING DDT ON STANDS BEFORE GAME TIME



AWARD Francis T. Murray (left) executive director of The Philadelphia Inquirer Charities, Inc., presents the Robert J. French Memorial Trophy to Steve Van Buren of the Eagles, as the "outstanding player" in the game.